



## Comparison Chart

	Panel Display	DSNet Basic	DSNet Plus
<b>Can perform the following functions locally / on-site</b>			
Set any and all wash parameters	X	X	X
Check total wash counts	X	X	X
Check the status of all inputs and outputs including positions and speeds	X	X	X
Manually initiate any wash function	X	X	X
Check status of anomalies	X	X	X
Reset the machine	X	X	X
Modify recipes	X	X	X
<b>Can perform the following functions remotely via Internet</b>			
Set any and all wash parameters		X	X
Check total wash counts		X	X
Check the status of all inputs and outputs including positions and speeds		X	X
Manually initiate any wash function		X	X
Check status of anomalies		X	X
Reset the machine		X	X
Modify recipes		X	X
View complete history of anomalies		X	X
Simple recipe editor		X	X
Animated display of the wash process		X	X
Graphical speed charting		X	X
Text message / email notification of shutdown faults		X	X
Offline recipe manager, creator and simulator			X
Chemical consumption tracking			X
Email notification when chemicals are low			X
Expense, revenue and margin tracking			X
Pump / motor run hours tracking			X
Advanced diagnostics			X
Wash performance statistics (both current and historical)			X
Wash counts including day-of-week and time-of-day breakdown			X
Wash duration			X
Wash success rate			X
Uptime & downtime breakdown			X
Utilization			X
Number of failures			X
MTBF (Mean Time Between Failures) – How often it breaks down			X
MTTR (Mean Time To Repair) – How long it is down when it breaks down			X





# Car Wash Management System

DSNet is a proprietary car wash site management system developed by D&S Car Wash Equipment Company. DSNet is a Graphical User Interface (GUI)-based software that features remote control, system monitoring, and diagnostic capability of the Quicksilver and Odyssey in-bay automatic machines. With DSNet, a wash owner can check on the status of their wash from anywhere in the world, at anytime. This technology ultimately provides a wash owner with complete **control** and flexibility over their equipment. More importantly, DSNet enables the wash owner to more effectively **manage** their business — in real time!

## Complete Management & Control

### Basic Edition

- Manual control of all carwash functions
  - Set wash parameters
  - Check total wash counts
  - Check status of "Inputs" and "Outputs"
  - Initiate any wash function
  - Check status of anomalies
  - Reset machine
  - Modify recipes
- Maintains history of anomalies
- Animations of wash process
- Graphical speed charting
- Text message/email notification

### Plus Edition

includes Basic Edition features, plus...

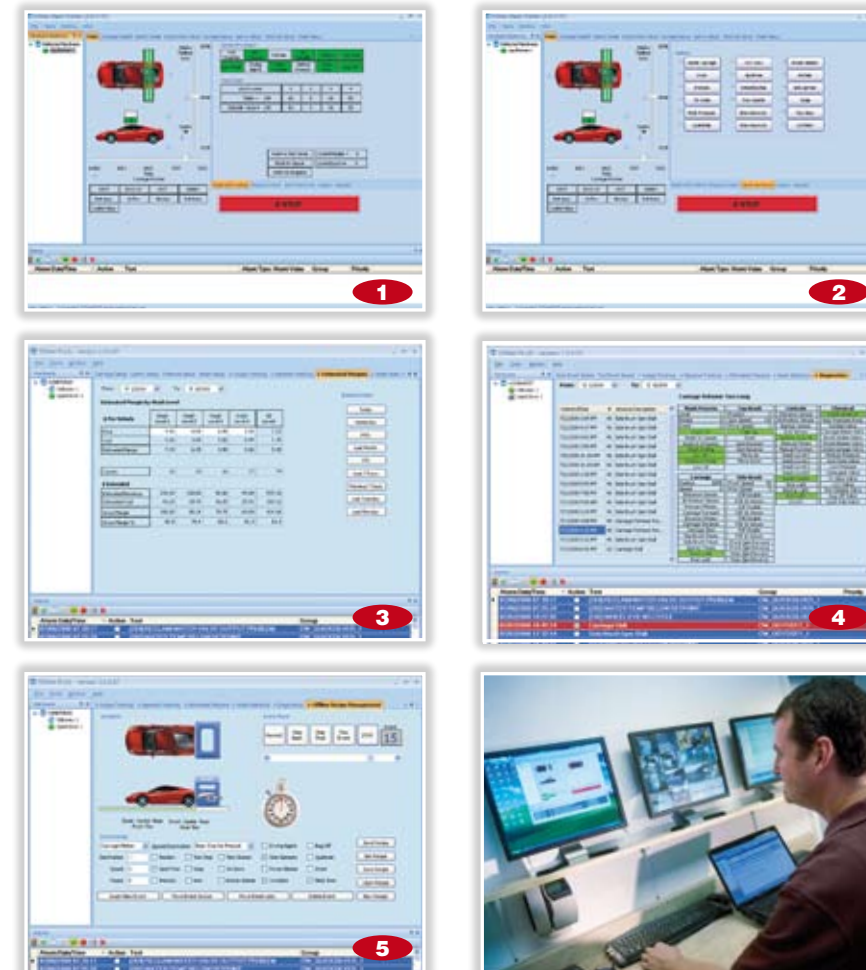
- Offline recipe manager, creator and simulator
- Chemical consumption tracking
- Expense, revenue and margin tracking
- Pump/motor run hours tracking
- Advanced diagnostics
- Wash performance statistics – current and historical
  - Wash counts by day/ week
  - Wash duration
  - Wash success rate
  - Uptime & downtime analysis
  - Utilization
  - Number of failures
  - MTBF (Mean Time Between Failures)
  - MTTR (Mean Time To Repair)

### Premium Edition

includes Basic Edition and Plus Edition features, plus...

Expected Release 2009

- Profit/loss statement generation
  - Profitability wash by wash
  - Profitability per day of the week
  - Profitability per time of day
- Merge revenue data from bays, vacs and vending systems
- Manage profitability by adjusting price at ACW



**1. Main Screen:** Provides at-a-glance status of the wash using an animated "Car-toon". Wash state (washing, shutdown, etc.) and wash counts are also accessible.

**2. Wash Functions Screen:** With a click of the mouse, any function can be manually activated. For example, clicking on the "Tri-Foam" button will turn on pump, open the low pressure valve, Tri-Foam valve and air valve.

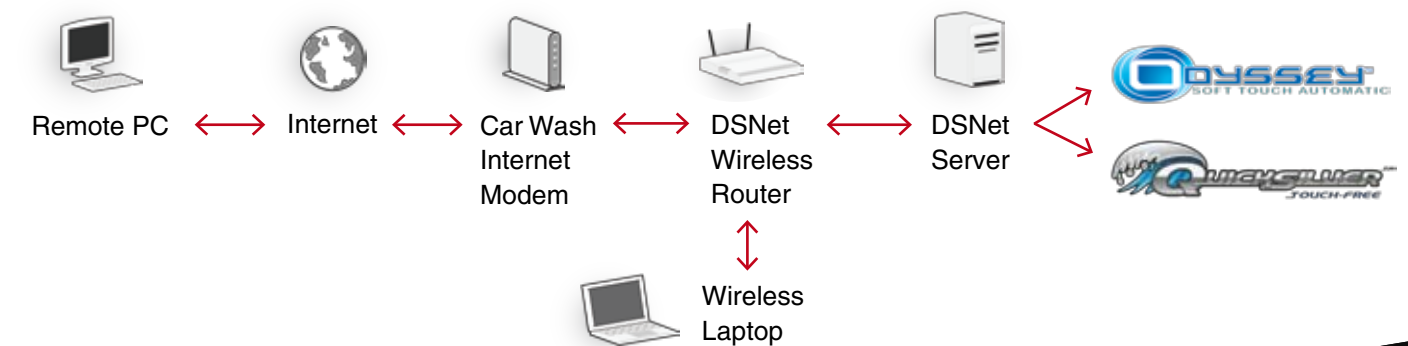
**3. Estimated Margins Screen:** Display real time revenue and gross margin data over any range of dates.

**4. Diagnostics Screen:** Display a history of anomalies, group anomalies together by type, and look at the status of key inputs and outputs when the anomaly occurred.

**5. Offline Recipe Management Screen:** Edit recipes offline while keeping your wash operational. Watch the new recipe in a simulator without consuming chemicals. Store the recipe as a computer file which can be emailed.

A modem with high-speed Internet connection, a PC with Windows XP or higher (with 512MB of RAM, 1.5 GHz processor), and an Ethernet port or wireless network card, are required. These components are linked to the DSNet server and wireless router to create a virtual carwash network.

## How DSNet Works



Basic Plus